

vinovo

Lounge



kwalu.

Furnishing the Future™

vinovo

Lounge

The Vinovo Lounge presents a seating option that is uniquely luxurious. Comfort level assured with an abundance of plush back and seat cushions. Heads will turn to view the double row of decorative nail head trim along the arms and back; all standard on the Vinovo. Extended arms create easy to grasp handgrips.



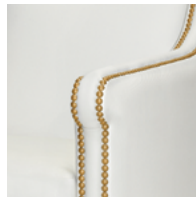
Model: VNV1111
28.5W 32D 35H 22SW 20SD 19.5SH 25AH

Features



Durable Finish

Kwalu's solid surface (1/8" thick) proprietary finish doesn't have any of the drawbacks of wood. The frames are moisture impervious, graffiti-resistant, easy to clean and maintenance-free.



Easy to Grasp Handgrip

Extended arm creates easy to grasp handgrip.



Removable Seat Deck

Removable seat deck prevents buildup of debris and provides for easy maintenance.



Optional Nail Head Finishes

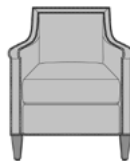
Choose from 3 optional nail head finishes – Nickel, Pewter or Antique Bronze.



10 Year Warranty

We offer a 10 Year Performance Warranty on both construction and finish, so the product is guaranteed to stay looking like new for 10 years.

Statement of Line



VNV1111
28.5W 32D 35H
25AH

kwalu | Furnishing the Future™

6160 Peachtree Dunwoody Rd. Building C, Atlanta, GA 30328

1-877-MY-KWALU kwalu.com



SEATVNVF0421